

FOOD GLORIOUS FOOD!

WHAT WILL YEAR 3/4 BE LOOKING AT IN THE SECOND SUMMER TERM 2026?

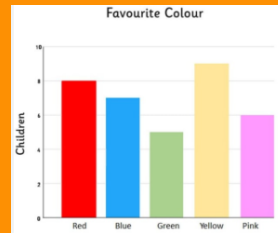
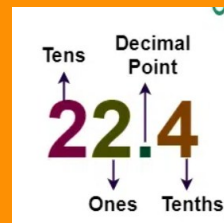
WHAT ARE WE LEARNING?

English	Persuasive Writing: Recipes Narrative Writing Playscripts
Maths	Decimals, Money and Statistics
Science	Living Things & Habitats
Art	Impasto Painting
Computing	
DT	Making biscuits for a specific audience.
French	All about animals.
Geography	Where does our food come from?
Music	Singing for performance
PE	Real PE and Cricket
PSHE	Jigsaw: Changing Me
RE	Christianity: Narnia
Outdoor	Practical maths outdoors.



MATHS

This term we will be finishing our unit on decimals by learning how to compare and order decimals before applying this to money. We will then move onto looking at shape, exploring turns and angles. Finally, we will finish by learning all about statistics including bar charts and line graphs.

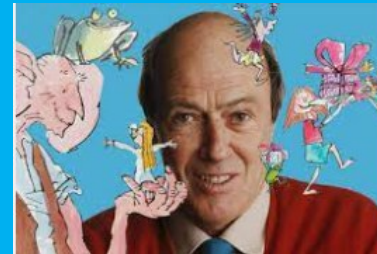


ENGLISH

In English we are writing a recipe based on our dream chocolate bars before writing a narrative based on our class story!

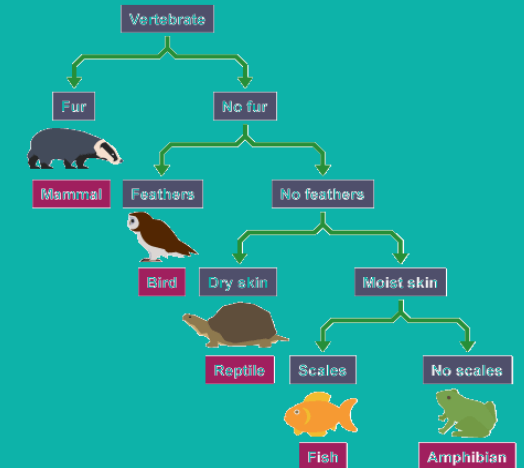
Our class novel this term is *Charlie & The Chocolate Factory*. Here is a synopsis of the novel:

Charlie and the Chocolate Factory is a classic children's novel by Roald Dahl. It follows impoverished but kind-hearted Charlie Bucket, who wins a golden ticket to tour the magical, secretive chocolate factory of the eccentric Willy Wonka. Ultimately, Charlie's humility and good behavior win him the grand prize.



LIVING THINGS & HABITATS

Animals can be grouped in lots of different ways based upon their characteristics. You can use classification keys to help group, identify and name a variety of living things. Here is an example of a classification key for vertebrates:



WHERE DOES OUR FOOD COME FROM?

All food makes a journey from farm to fork. How far the food has travelled is called food miles.

We should be looking to buy food that has travelled the least to help reduce pollution and protect the environment.

Global trade allows us to have access to many foods and materials that cannot be found in the UK through **importing** (goods or services purchased from one country and brought into the UK) and **exporting** (goods or services made in the UK and sold to another country).



TT ROCKSTARS

KEEP PRACTISING YOUR
TIMES TABLES ON TT ROCKSTARS READY FOR YOUR
MULTIPLICATION TABLES CHECK!

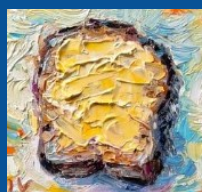


FOOD GLORIOUS FOOD!

WHAT WILL YEAR 3/4 BE LOOKING AT IN THE SECOND SUMMER TERM 2026?

ART

In Art we will use the impasto medium with a suitable technique to create a textured effect; choose shapes and colours with support or from pre printed images; say what they like about their work and how it compares to the work of their peers.



DESIGN & TECHNOLOGY

Children will be able to describe features of biscuits using taste, texture and appearance as well as follow a recipe. Then, with support, adapt a recipe according to a specific consumer market.

We will also be measuring out our own ingredients, to make these delicious biscuits.

Each serving contains

Energy 1046kJ	Fat 5g	Saturates 1.3g	Sugars 34g	Salt 0.9g
	LOW	LOW	HIGH	MED
12.5%	7%	6.5%	38%	15%

of an adult's reference intake
Typical values (as sold) per 100g: 697kJ/ 167kcal



KEY VOCABULARY

food miles The distance food has travelled to get to your plate. Food must travel from the farm it is grown on or the factory it is made in to a supermarket or shop to be sold.

carbon emissions Harmful gases such as **carbon dioxide** are released into the earth's atmosphere when we use fossil fuels to provide energy. We need energy to grow, produce and transport food. Some food uses more energy than others.

local A place close to where you live. Fruit and vegetables that were grown near you would be considered local. A shop in your town would be a local shop as opposed to a shop you had to travel to.

transport Moving people, animals, or items for sale like food from one place to another. Food can travel by car, bus, lorry, boat and plane. These methods of transport all need a lot of energy.

food chain A food chain is a list of organisms in a habitat that shows their feeding relationship .

classification Animals can be divided into groups or 'classified' by looking at the similarities and differences between them .

habitat A natural environment that an animal lives in .

producer Plants get their energy from the Sun. They are called **producers** because they make their own food.

consumer Animals are called **consumers** because they eat plants and other animals. They do not make their own food.

predator Animals that eat other animals.

prey Animals eaten by other animals.

LES ANIMAUX

This half term our French moves on from learning about things in the classroom to learning the names of eight animals in French,. We will be able to say which animals we like, and if we have any pets of our own, as well as saying animals that we don't have. We will also recap all of the French learning that we have done this year,.



USEFUL LINKS

BBC Bitesize– Food Chains & Classification
<https://www.bbc.co.uk/bitesize/topics/z484382/articles/zwbtxsg>

Purple Mash
<https://www.purplemash.com/sch/holbeach-pe12>

Times Tables Rockstars
<https://play.trockstars.com/auth/school/student/18519>

Please note, these are external links that have been checked , but caution is always suggested when using the internet.

PREVIOUS LEARNING

As part of our Science we will be revisiting animals and their habitats as we look one step further and discover all about food chains in those habitats.

In Year 1 and 2, you have learnt about the differences between things that are living, dead, and things that have never been alive.

-You should know that most living things live in habitats how different habitats provide for the basic needs of animals and plants.

In Maths we will continue to build on our knowledge of the four operations, applying this to telling the time, reading and writing angles and of course working towards the Year 4 Multiplication Tables Check.

Furthermore, we will be building on our knowledge from last term on the visual elements in Art and process of research, design, make and evaluate in Design Technology .